

OFFERS OVER £325,000
Portland Drive, Hodthorpe, Worksop,



Welcome to **BuckleyBrown**, where every home is carefully presented, so you can explore with clarity and confidence.

BuckleyBrown
ESTATE AGENTS

"A beautifully presented and spacious four-bedroom detached family home, finished to a high modern standard throughout. Offering generous living accommodation and excellent value for money, this is a fantastic home for families looking for space, style, and comfort."

Tim, Valuer



A MODERN CLASSIC

This beautifully presented four-bedroom detached home offers spacious and versatile accommodation, making it an ideal choice for modern family living.

Finished to a high standard throughout, the property features a welcoming entrance hall, a lovely lounge perfect for relaxing, and a separate dining room ideal for entertaining family and friends. The modern fitted kitchen provides ample storage and workspace, while upstairs you'll find four well-proportioned bedrooms, including a generous principal bedroom, along with a contemporary family bathroom. Externally, the property benefits from a well-maintained garden, driveway parking, and an attractive overall appearance, making it a fantastic home that offers both quality and excellent value.



THE FINER DETAILS

Nestled in the sought-after village of Hodthorpe, near Worksop, this exceptional four-bedroom detached family home is beautifully presented throughout and finished to a high modern standard

Offering stylish interiors, generous living space, and a warm, contemporary feel, this property is perfect for growing families seeking a home that is ready to move straight into.

The ground floor welcomes you with a bright and inviting entrance hallway leading to a spacious lounge, flooded with natural light through patio doors that open onto the rear garden. A separate dining room provides the perfect setting for family meals and entertaining guests, while the modern fitted kitchen offers a sleek and practical space with ample storage and work surfaces. Completing the ground floor is a convenient downstairs WC.

To the first floor, the property offers four generously sized bedrooms, all beautifully decorated in a modern and neutral style. The impressive principal bedroom benefits from its own en-suite shower room, while the remaining bedrooms are served by a stylish family bathroom, making the layout ideal for busy family life.

Externally, the home continues to impress with a large driveway providing ample off-road parking and access to the integral garage. To the rear is a private, beautifully maintained garden featuring a lush lawn and a spacious patio area, creating the perfect space for outdoor dining, relaxing, or entertaining during the warmer months. This truly is a stunning family home that combines space, style, and comfort in an excellent location.

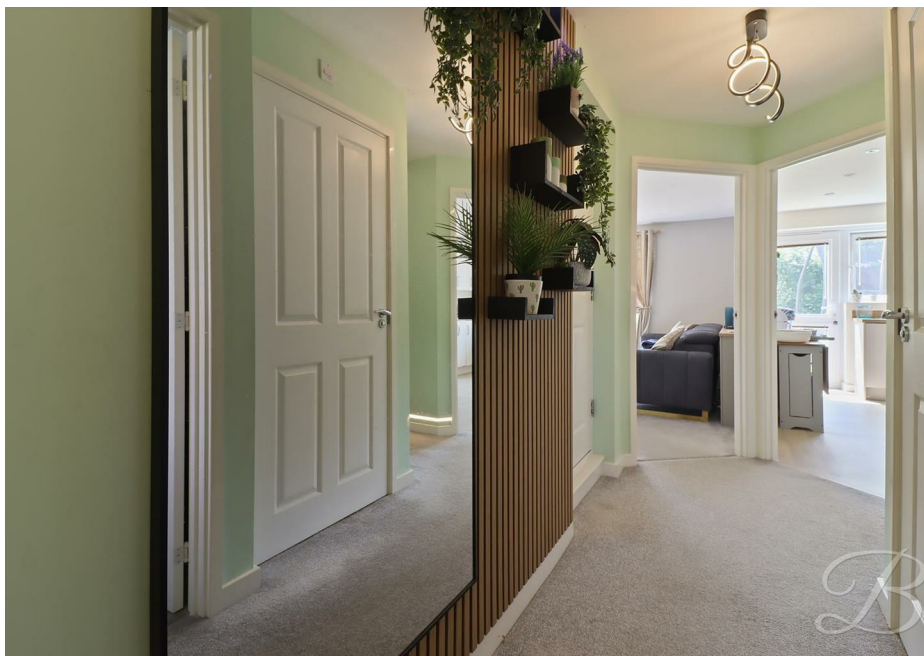




BuckleyBrown
ESTATE AGENTS







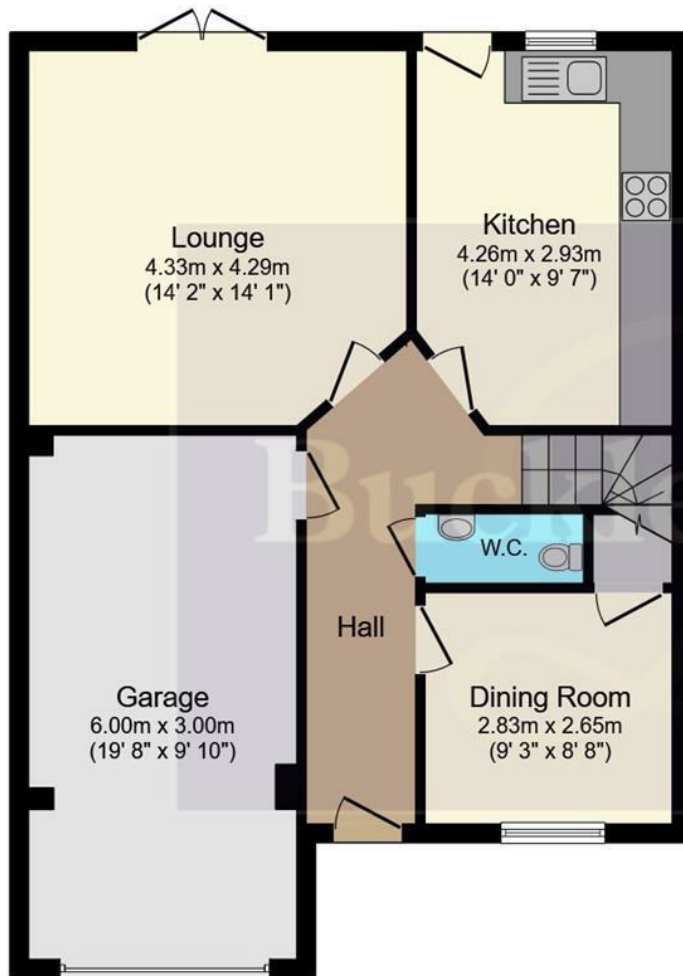
LIFE IN HODTHORPE

Life in Hodthorpe offers the perfect balance of peaceful village living and everyday convenience.

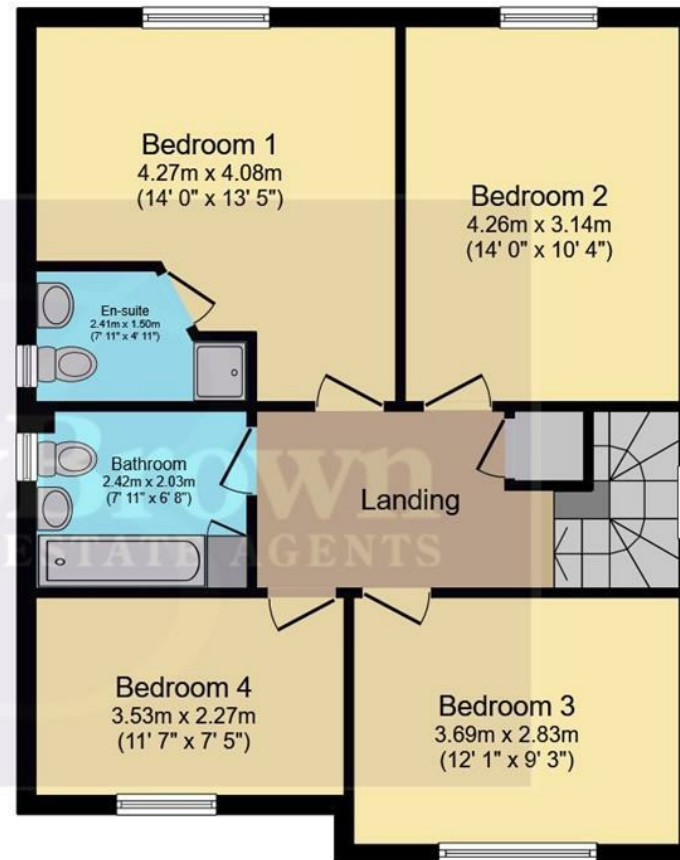
Surrounded by open countryside, the area is ideal for those who enjoy scenic walks, cycling, and a quieter pace of life, while still being just a short drive from Worksop, providing a great selection of supermarkets, shops, restaurants, cafés, and leisure facilities.

Families will appreciate the range of nearby schools, parks, and green spaces, while commuters benefit from excellent road links via the M1 and A57, along with rail connections from nearby Worksop, making travel to Sheffield, Chesterfield, and Nottingham straightforward. Whether you're looking to raise a family, enjoy more outdoor space, or simply settle into a welcoming community, Hodthorpe is a fantastic location that combines village charm with excellent accessibility.





Ground Floor



First Floor

Total floor area: 136.6 sq.m. (1,470 sq.ft.)

This floor plan is for illustrative purposes only. It is not drawn to scale. Any measurements, floor areas (including any total floor area), openings and orientations are approximate. No details are guaranteed, they cannot be relied upon for any purpose and do not form any part of any agreement. No liability is taken for any error, omission or misstatement. A party must rely upon its own inspection(s). Powered by www.Propertybox.io

Key Features

Beautifully presented four-bedroom detached family home

Finished to a high modern standard throughout

Spacious and versatile accommodation

Bright and welcoming entrance hallway

Generous lounge with patio doors to the rear garden

Separate dining room, ideal for entertaining

Four well-proportioned bedrooms

Principal bedroom with en-suite shower room

Large driveway providing ample off-road parking

Beautifully maintained rear garden with lawn and patio

Close to local amenities, schools, and excellent transport links

BuckleyBrown
ESTATE AGENTS



These particulars are intended as a guide only and do not form part of any offer or contract. All descriptions, measurements, images and plans are provided for illustration purposes and should not be relied upon as statements of fact. Prospective purchasers should satisfy themselves as to the accuracy of the information. Buckley Brown Estate Agents accept no liability for any loss arising from reliance on these details.

© Buckley Brown Estate Agents 2026. All rights reserved.

Exceptional homes deserve
exceptional representation.

Let's Chat.

01246 605121

bolsover@buckleybrown.co.uk

[buckleybrown.co.uk](https://www.buckleybrown.co.uk)

BuckleyBrown
ESTATE AGENTS